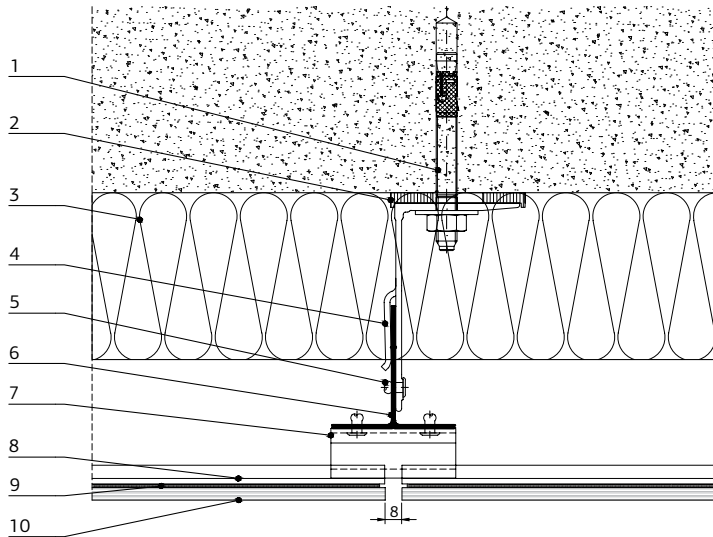




**VARIO GH**  
VENTILATED FAÇADE SYSTEM

**ETEM**

# VENTILATED FAÇADE SYSTEM DESIGNED FOR THE INSTALLATION OF FLAT FAÇADE MATERIALS WITH ADDITIONAL HORIZONTAL SUPPORTING PROFILES.



## MAIN ADVANTAGES

Fast, easy and secure installation

Increasing of the inertial characteristics of the façade material

Possibility for preparation of façade panels in a workshop

The preparation for installation of the system does not depend on weather conditions

Possibility for using cladding materials with different thickness

Mechanical support of the façade material

# VARIO GH

VENTILATED FAÇADE SYSTEM

## DESIGN

DESIGNED ON THE PRINCIPLE OF NATURAL VENTILATION, ACHIEVED THROUGH THE CREATION OF A 4-8 CM GAP BETWEEN THE FAÇADE MATERIAL AND THE THERMAL INSULATION. THE SYSTEM USES ADDITIONAL SUPPORTING HORIZONTAL PROFILES.

## HIGH QUALITY PRODUCT

DEVELOPED TO ENSURE THE SAFE AND EFFICIENT INSTALLATION OF CLADDING MATERIALS TO THE BUILDING SUBSTRATE.

## SECURITY

THE SYSTEM ALLOWS THE MOVEMENT OF THE FAÇADE MATERIAL IN VARIOUS THERMAL EXPANSIONS, USING WIDE VARIETY OF PROFILES AND FIXING BRACKETS.

1. anchor
2. thermo pad
3. thermal insulation
4. fixing bracket 100/90 mm
5. rivet 4.8x12 mm
6. main supporting profile
7. main horizontal supporting profile
8. supporting bottom profile
9. adhesive
10. façade material
11. supporting top profile
12. plug

## CHARACTERISTICS

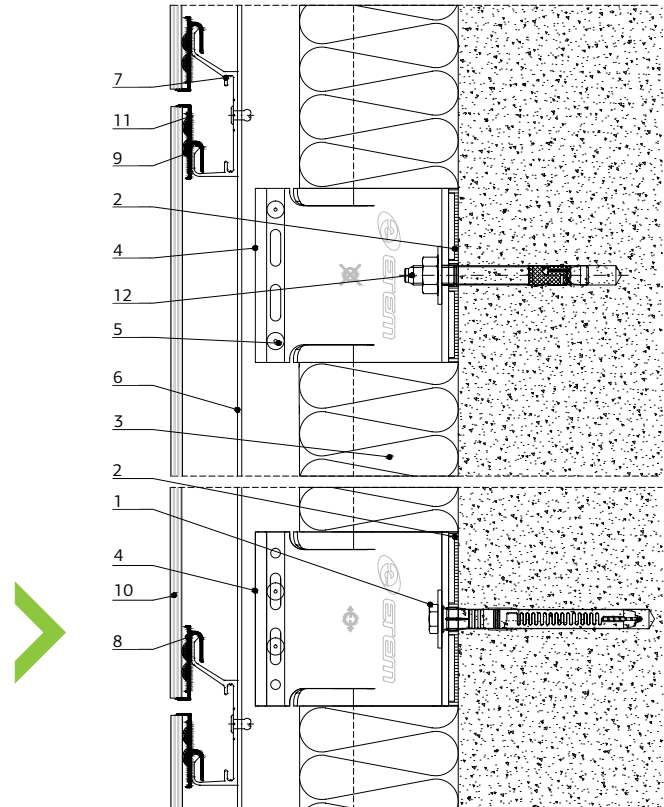
High strength of the adhesive bonding  
with mechanical support

Excellent performance in different weather conditions

Possibility for defining different horizontal gaps –  
10/20 mm

High energy efficiency

Natural ventilation



[etem.com](http://etem.com)