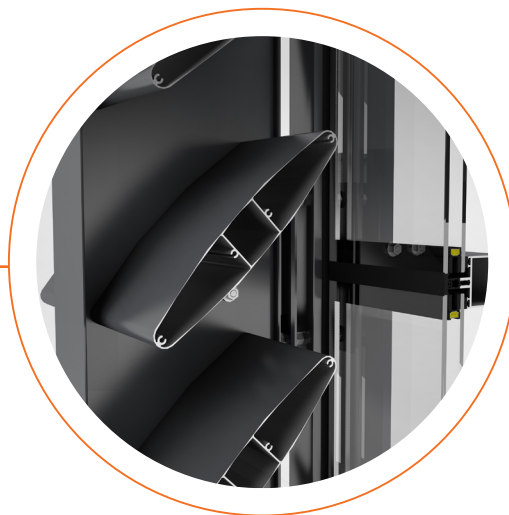
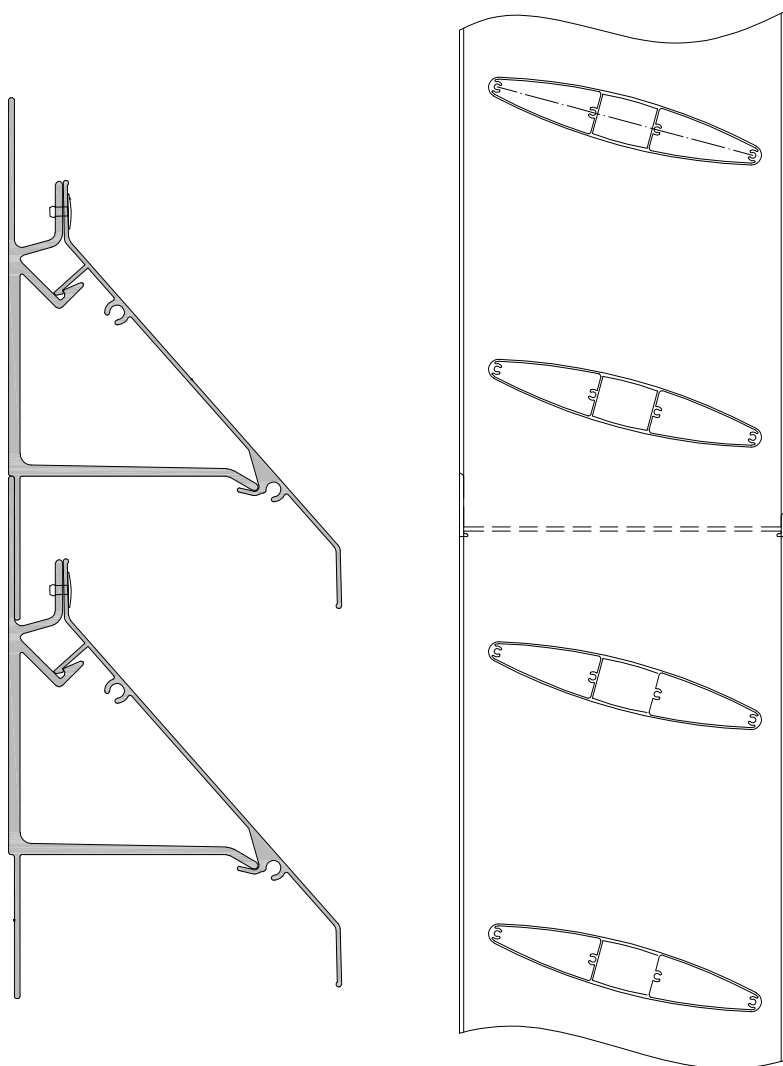


E66 Solar protection louvers



E66 system offers louvers and blades of various types of design and dimensions. The solutions cover a wide range of architectural requirements.



Typologies

- Louver gratings
- Sheds over entrance doors
- Claustras
- Decorative shading skins
- Pergolas

The system can be implemented as independent or in combination with ETEM curtain walls and window systems.

Technical features

Open-section louvers for the construction of overhangs and blade type sections for elevation sun shading

Covering sizes ranging up to 600mm

Elliptical & rectangular sections

Multiple variations and hanging methods

Horizontal & vertical application, parallel or perpendicular to the building

Fixed application (concealed or side-cap fixing)

Rotating (fixed axes) blades with manual or motorized fittings

Application can be combined with ETEM façade systems with the use of proprietary profiles

Surface treatment options

RAL colours

ETEM colours

Anodizing

Wood effects

Quality Standards:

- QUALICOAT
- QUALANOD
- QUALIDECO

Production certificates

- EN ISO 9001
- EN ISO 14001
- OHSAS 18001

