

TECHNICAL BULLETIN

N 86 - 2019. 06

E50

Additional cutting lists for Hotel Type

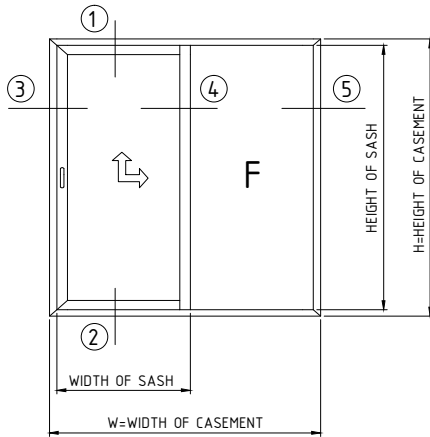
content:

■ DETAILS
■

■
■

ETEM

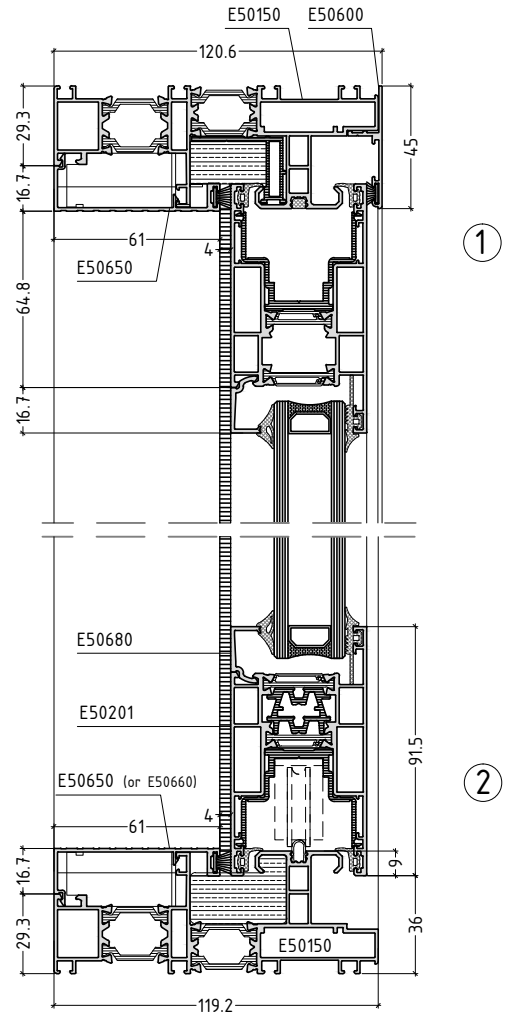
HOTEL TYPE
LIFT & SLIDE MECHANISM - FIXED (CLASSIC INTERLOCK)



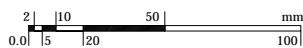
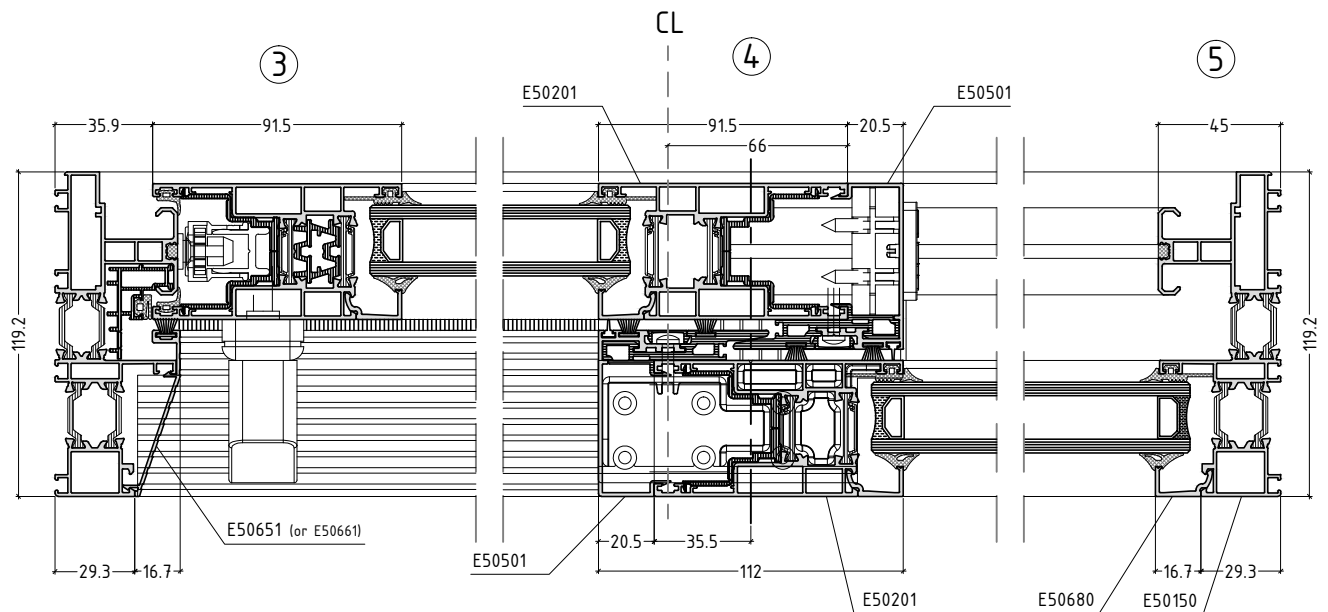
CUTTING LENGTHS	
WIDTH OF SASH E50201	$= \frac{W}{2} + 30$
HEIGHT OF SASH E50201	$= H - 72$
HEIGHT OF SASH E50201 (AS MULLION FOR FIXED)	
FOR MACHINING M50-52	$= H - 92$
FOR MACHINING M50-52_2 & M50-65	$= H - 59$
HEIGHT OF SUPL. E50501 (FOR SLIDING)	$= H - 92$
(FOR FIXED - M50-52)	$= H - 92$
(FOR FIXED - M50-52_2 & M50-65)	$= H - 59$

DIMENSION IN MILLIMETERS
ALL MESURMENTS ARE TAKEN FROM THE EXTERNAL SIDE OF THE FRAME

CALCULATION OF CUTTING LENGTH FOR GLASS UNIT	
width glass sash	$= \text{WIDTH OF SASH} - 160$
height glass sash	$= \text{HEIGHT OF SASH} - 160$
width glass FIX	$= \frac{W}{2} - 108$
height glass FIX	$= H - 67$



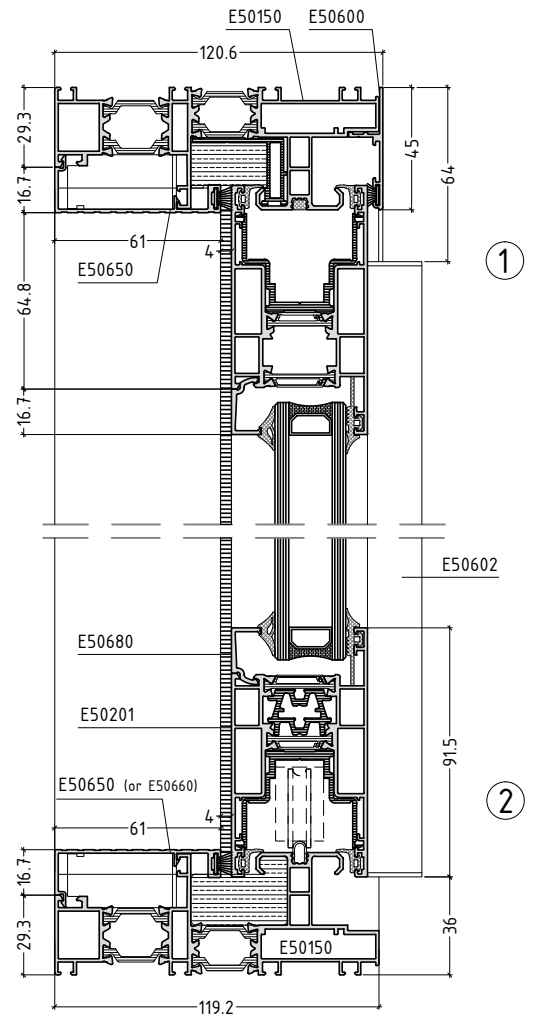
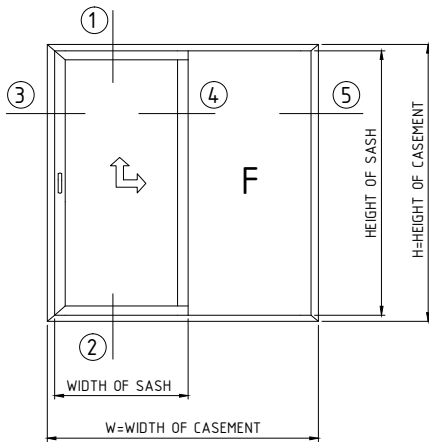
CLASSIC INTERLOCK



HOTEL TYPE

LIFT & SLIDE MECHANISM - FIXED (ALTERNATIVE NARROW INTERLOCK)

T50-14



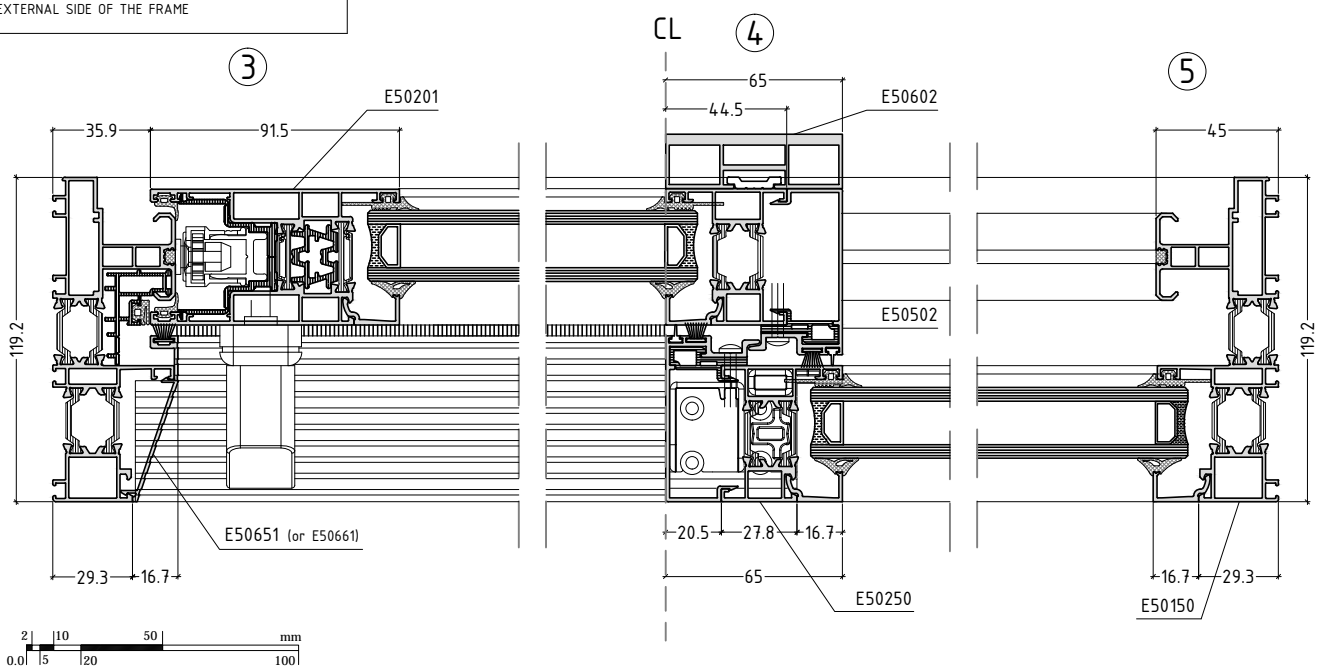
CUTTING LENGTHS	
WIDTH OF SASH E 50201/2/3	$= \frac{W}{2} + 9$
HEIGHT OF SASH E 50201/2/3	$= H - 72$
HEIGHT OF SASH E 50250 (FOR SASH PART)	$= H - 222$
HEIGHT OF SASH E50250 (AS MULLION FOR FIXED)	$= H - 92$
FOR MACHINING M50-55	$= H - 59$
FOR MACHINING M50-55_1	$= H - 59$
HEIGHT OF SUPL. E 50502 (FOR SLIDING)	$= H - 92$
(FOR FIXED - M50-55)	$= H - 92$
(FOR FIXED - M50-55_1)	$= H - 59$
HEIGHT OF E 50602	$= H - 103$

DIMENSION IN MILLIMETERS

ALL MEASUREMENTS ARE TAKEN FROM THE EXTERNAL SIDE OF THE FRAME

CALCULATION OF CUTTING LENGTH FOR GLASS UNIT	
width glass sash	$= \frac{W}{2} - 104$
height glass sash	$= \text{HEIGHT OF SASH} - 160$
width glass FIX	$= \frac{W}{2} - 86.5$
height glass FIX	$= H - 67$

ALTERNATIVE NARROW INTERLOCK

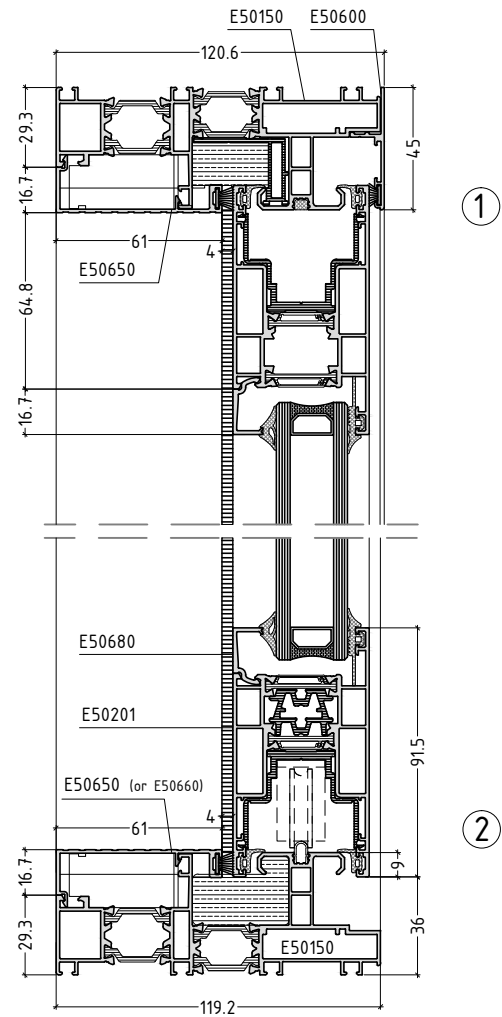
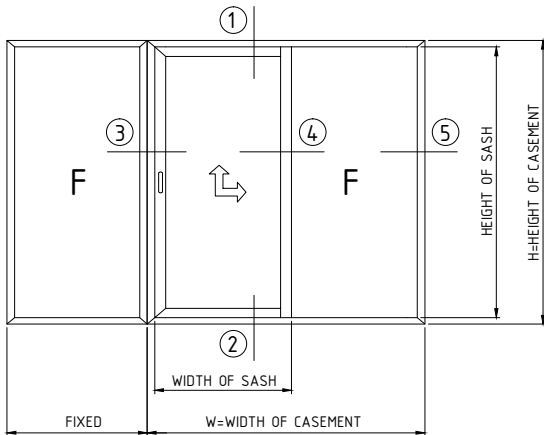


sliding system with thermal break

E50

HOTEL TYPE
FIXED - LIFT & SLIDE MECHANISM - FIXED

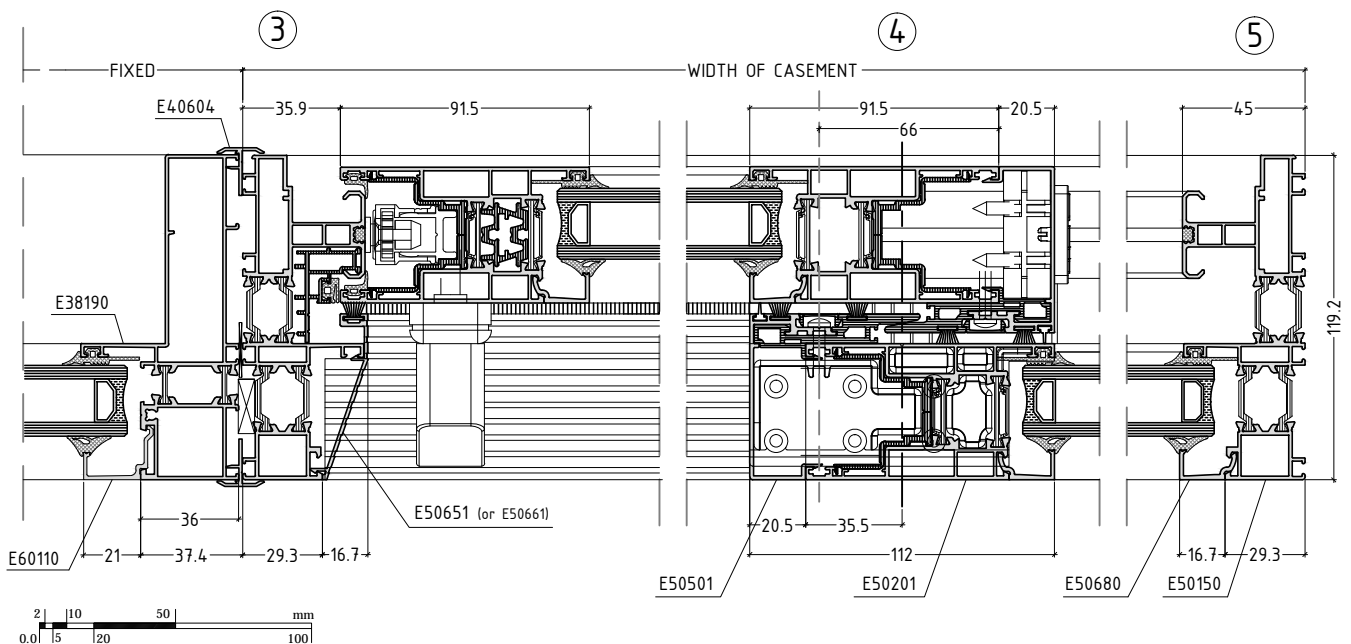
T50-15



CUTTING LENGTHS	
WIDTH OF SASH E 50201	$= \frac{W}{2} + 30$
HEIGHT OF SASH E 50201	$= H - 72$
HEIGHT OF SASH E50201 (AS MULLION FOR FIXED)	
FOR MACHINING M50-52	$= H - 92$
FOR MACHINING M50-52_2 & M50-65	$= H - 59$
HEIGHT OF SUPL. E50501 (FOR SLIDING)	$= H - 92$
(FOR FIXED - M50-52)	$= H - 92$
(FOR FIXED - M50-52_2 & M50-65)	$= H - 59$

DIMENSION IN MILLIMETERS
ALL MESURMENTS ARE TAKEN FROM THE EXTERNAL SIDE OF THE FRAME

CALCULATION OF CUTTING LENGTH FOR GLASS UNIT	
width glass sash	$= \text{WIDTH OF SASH} - 160$
height glass sash	$= \text{HEIGHT OF SASH} - 160$
width glass FIX	$= \frac{W}{2} - 108$
height glass FIX	$= H - 67$
width glass FIXED	$= \text{FIXED} - 83$
height glass FIXED	$= \text{FIXED} - 82$

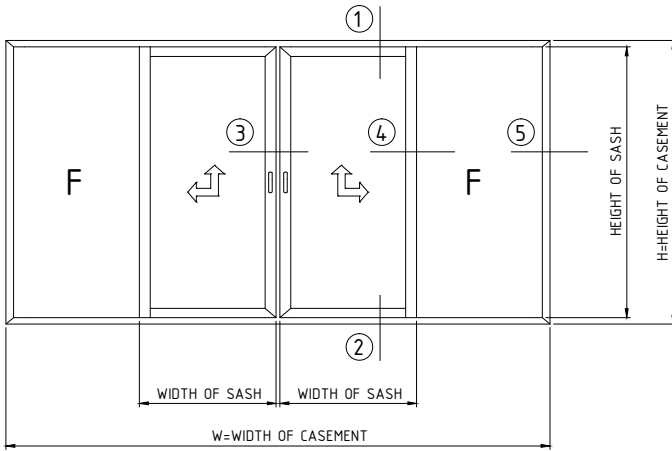


sliding system with thermal break

E50

HOTEL TYPE
FIXED - FACING DOUBLE VENT LIFT & SLIDE - FIXED

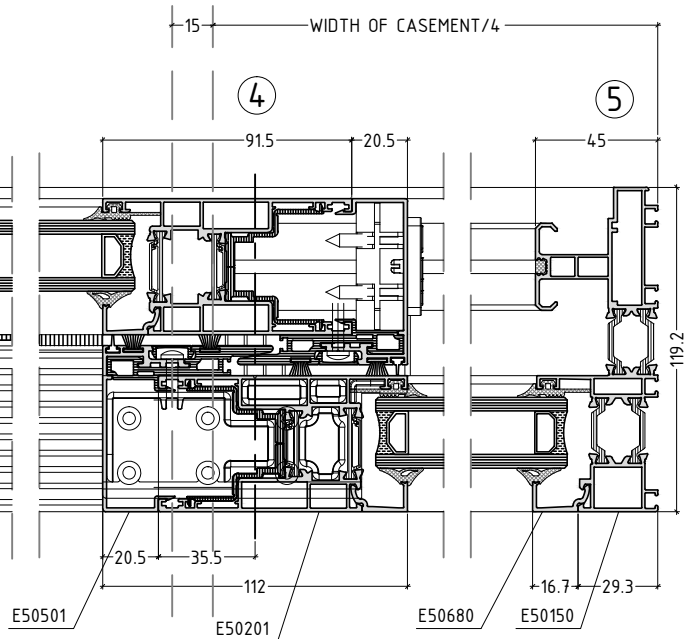
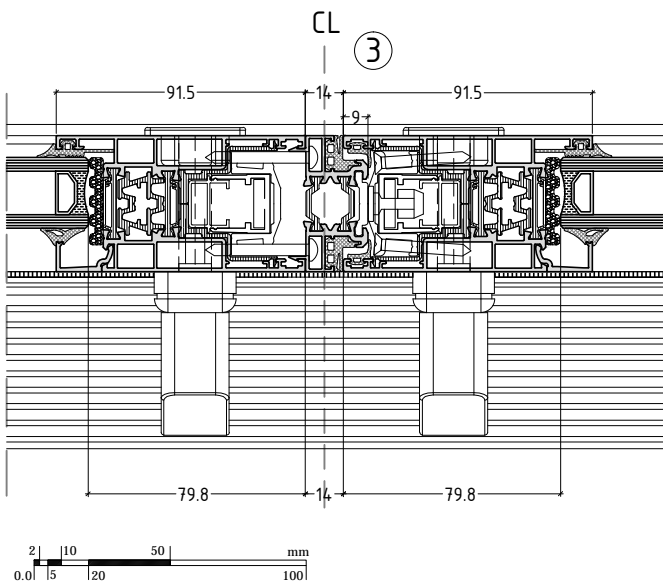
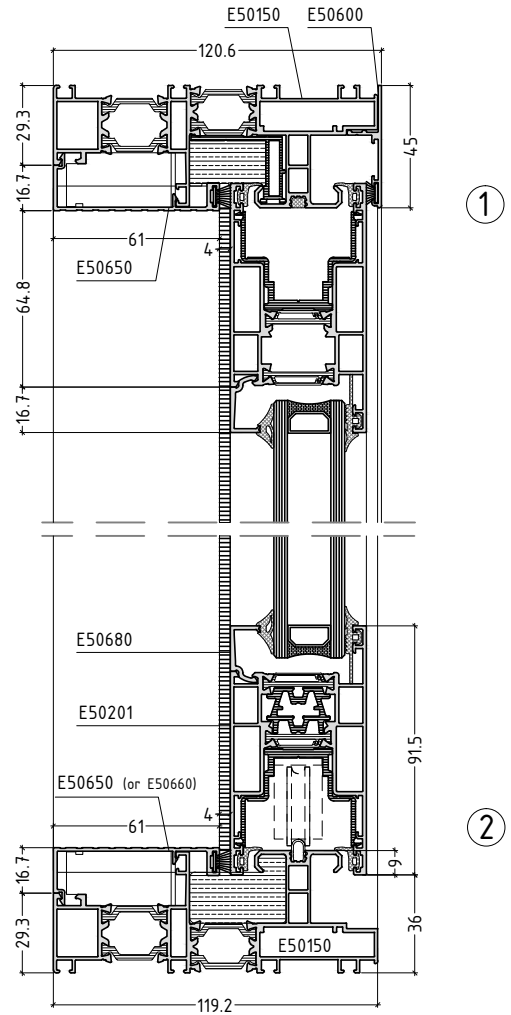
T50-16



CUTTING LENGTHS	
WIDTH OF SASH E 50201	$= \frac{W}{4} + 44$
HEIGHT OF SASH E 50201	$= H - 72$
HEIGHT OF SASH E50201 (AS MULLION FOR FIXED)	
FOR MACHINING M50-52_1	$= H - 92$
FOR MACHINING M50-52_2	$= H - 59$
HEIGHT OF SUPL. E50501 (FOR SLIDING)	
(FOR FIXED - M50-52_1)	$= H - 92$
(FOR FIXED - M50-52_2)	$= H - 59$
HEIGHT OF ADJOIN. E 50500	$= H - 126$

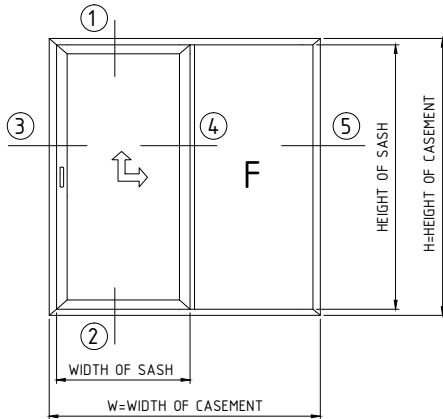
DIMENSION IN MILLIMETERS
ALL MESURMENTS ARE TAKEN FROM THE EXTERNAL SIDE OF THE FRAME

CALCULATION OF CUTTING LENGTH FOR GLASS UNIT	
width glass sash	$= \text{WIDTH OF SASH} - 160$
height glass sash	$= \text{HEIGHT OF SASH} - 160$
width glass FIX	$= \frac{W}{4} - 93$
height glass FIX	$= H - 67$



HOTEL TYPE LIFT & SLIDE MECHANISM - FIXED

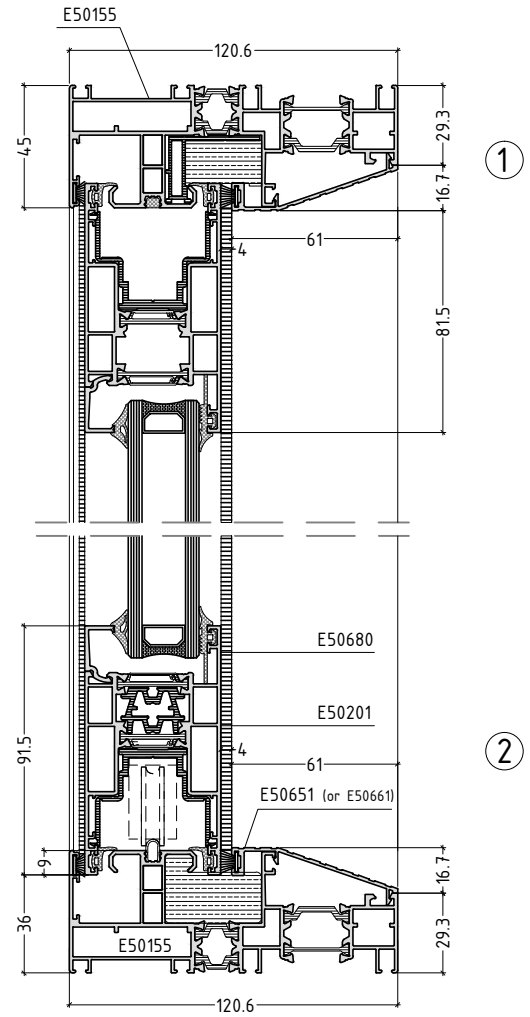
T50-17



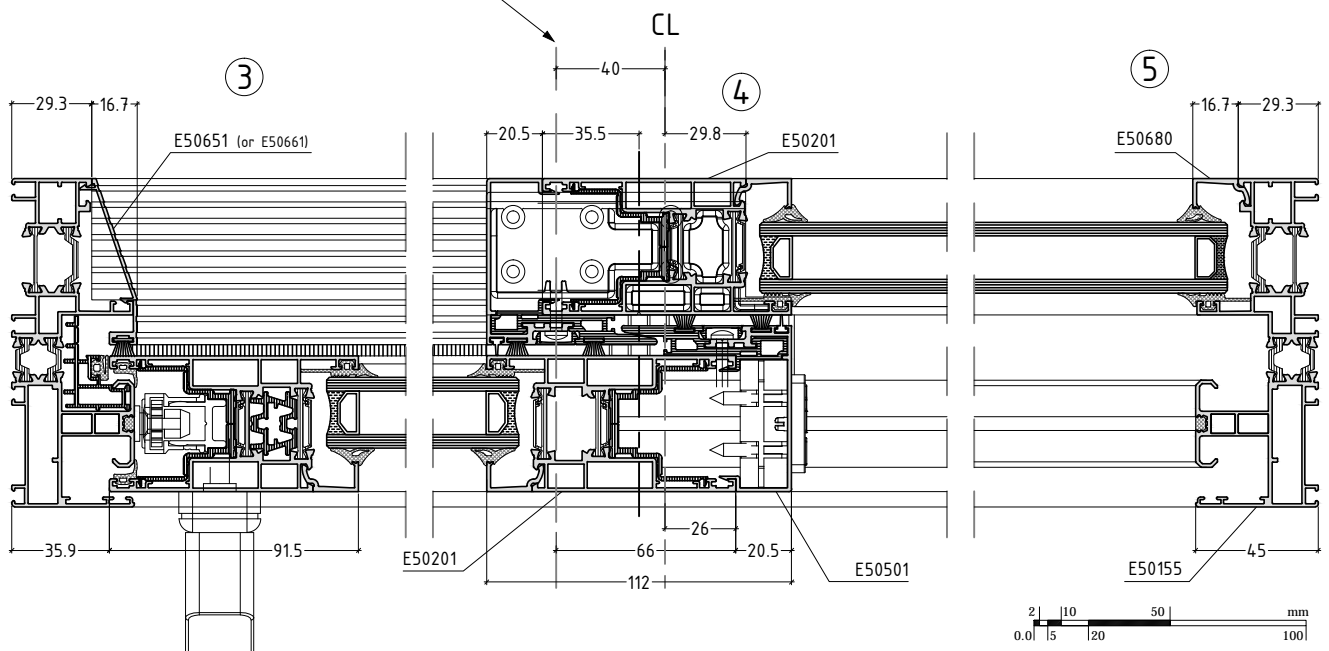
CUTTING LENGTHS	
WIDTH OF SASH E50201	$= \frac{W}{2} - 10$
HEIGHT OF SASH E50201	$= H - 72$
HEIGHT OF SASH E50201 (AS MULLION FOR FIXED)	
FOR MACHINING M50-52	$= H - 92$
FOR MACHINING M50-52_2	$= H - 59$
HEIGHT OF SUPL. E50501 (FOR SLIDING)	
(FOR FIXED - M50-52)	$= H - 92$
(FOR FIXED - M50-52_2)	$= H - 59$

DIMENSION IN MILLIMETERS
ALL MEASUREMENTS ARE TAKEN FROM THE EXTERNAL SIDE OF THE FRAME

CALCULATION OF CUTTING LENGTH FOR GLASS UNIT	
width glass sash	$= \text{WIDTH OF SASH} - 160$
height glass sash	$= \text{HEIGHT OF SASH} - 160$
width glass FIX	
$= \frac{W}{2} - 68$	
height glass FIX	
$= H - 67$	



IMPORTANT:
the notch of the PVC connector (074815),
40mm from the middle of frame towards opening part

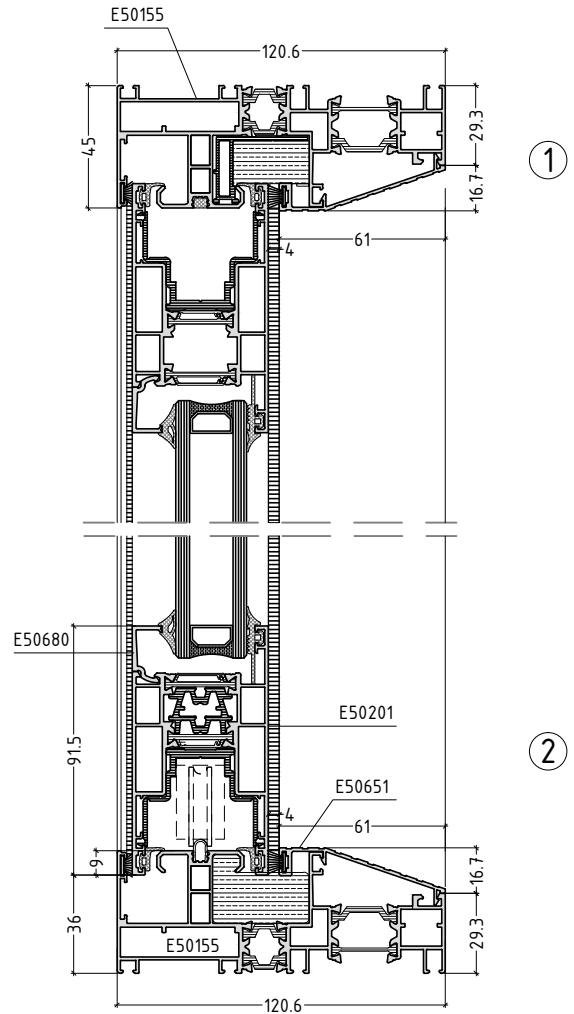
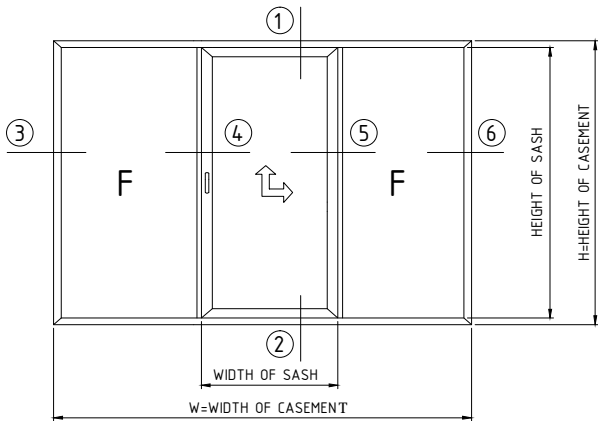


sliding system with thermal break

E50

T50-18

HOTEL TYPE
FIXED - LIFT & SLIDE MECHANISM - FIXED



CUTTING LENGTHS	
WIDTH OF SASH E50201	= $\frac{W}{3} + 12$
HEIGHT OF SASH E50201	= $H - 72$
HEIGHT OF SASH E50201 (AS MULLION FOR FIXED)	
FOR MACHINING M50-52	= $H - 92$
FOR MACHINING M50-52_2	= $H - 59$
HEIGHT OF SUPPL. E50501 (FOR SLIDING)	= $H - 92$
(FOR FIXED - M50-52)	= $H - 92$
(FOR FIXED - M50-52_2)	= $H - 59$
HEIGHT OF 'T' E50350	= $H - 92$
HEIGHT OF INV. E50503	= $H - 72$

DIMENSION IN MILLIMETERS
ALL MESUREMENTS ARE TAKEN FROM THE EXTERNAL SIDE OF THE FRAME

CALCULATION OF CUTTING LENGTH FOR GLASS UNIT	
width glass sash	= WIDTH OF SASH - 160
height glass sash	= HEIGHT OF SASH - 160
width glass FIX	= $\frac{W}{3} - 48$
height glass FIX	= $H - 67$

IMPORTANT:
the notch of the PVC connector (074815),
60mm from W/3 (towards frame center)

IMPORTANT:
the notch of the PVC connector (074815),
60mm from W/3 (towards frame center)

