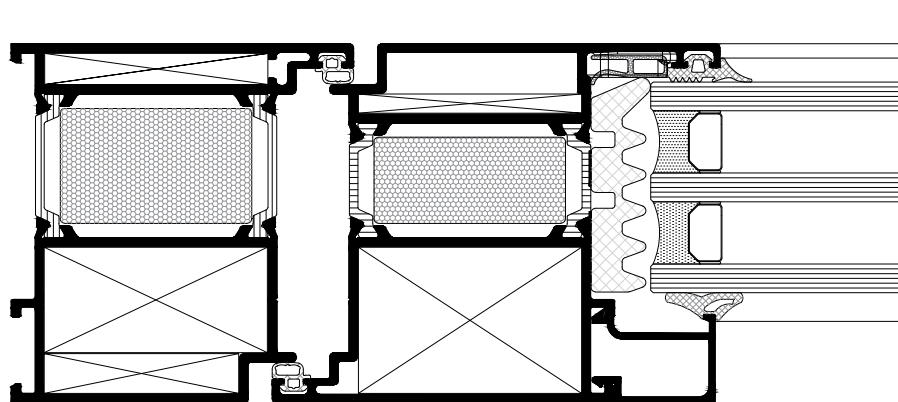


E75 Door System



E75 door system is a premium solution for the construction of main entrance doors. The profiles are thermally insulated, offering flush surface. Heavy duty door system with allowing usage of triple glazing.



Technical features

- Glazing infill range: up to 55 mm
- Double & triple glazing option
- Frame depth: 75 mm
- Leaf depth: 75 mm
- Leaf-frame width: 148 mm
- Compatible with curtain wall system
- Energy efficiency concepts: Advanced, Improved & Basic
- Anti B-metal polyamide

Performance

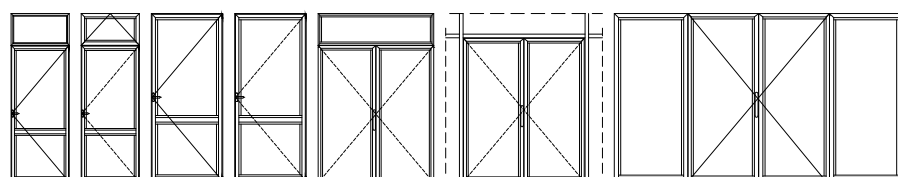
Air Permeability:	up to class 3
Watertightness:	up to class 3A
Resistance to wind load:	up to class C5
Burglar Resistance:	up to RC3

Hardware

- Door sill area is sealed using dedicated door sealing system
- Max. door weight: 200 kg
- Concealed, external and bridge hinges
- Multiple locking points

Typologies

- Single side door opening with or without fanlight and/or bottom hung casement
- Inward & outward opening
- Single & double leaf
- Rectangular



Surface treatment options

- RAL colours
- ETEM colours
- Anodising
- Wood effects
- Quality Standards:
 - QUALICOAT
 - QUALANOD
 - QUALIDECO

