

The logo for ETEM, featuring the word "ETEM" in a bold, italicized, sans-serif font.

[www.etem.com](http://www.etem.com)

# CORPORATE PROFILE





WE SHAPE  
THE PRESENT,  
**WE DESIGN  
THE FUTURE**

THRIVING FOR MORE THAN A CENTURY

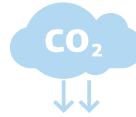
For 50 years, ETEM, the most historic aluminum extrusion company in Greece, pioneers and creates products of high aesthetics and quality, covering from the simplest to the most complex needs of modern consumers.

With our view on tomorrow, we are committed to designing innovative products and services that will continue to improve the lives of people and society as a whole. Our vision for the future, a better, sustainable environment.



# ETEM AT A GLANCE

FOCUSING  
ON TECHNOLOGY  
AND INNOVATION



Aligned with European Green Deal principles through low carbon operations and circular products



Highly experienced personnel with industrial experience and deep expertise in secondary metals production

E TEM WORLDWIDE

Conquering international markets with projects in more than 57 countries



Exports in  
**57 countries**

## FACTS

2 Extrusion lines

20MN 7"  
27MN 9"

18MN 7" (planned)  
Capacity  
13K tons

Planned expansion  
7K tons

1 Powder Coating Line

Vertical white  
4k tn/annum

1 Automated Warehouse

Storage 1500 cells

2 Thermo break lines

Capacity  
3.5k tn/annum

1 Robotic Storage

Storage  
7.000 codes

10 Machining workstation

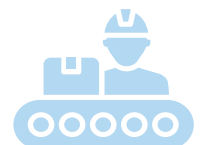
Cutting  
Punching  
CNC



Trading networks in  
**9 countries**



8 Logistic Centers in  
**5 countries**



Production Capacity  
**18.000 tons/year**



# 5 WORDS THAT DESCRIBE ETEM

**Respect** | Towards the human being, the consumers, our partners, the society and the environment

**Experience** | Because our first energy systems were designed in the late '80s.

**Expertise** | Because we are the only company in Greece that has managed to excel in the most demanding, and with the highest standards, Automotive industry.

**Quality** | Because we could not do less than the best for a product that is considered an investment for the next 40 years.

**Reliability** | Because our products stand imperiously in all the big projects that we have undertaken and we meet them every day, for 50 years in a row.



# DID YOU KNOW THAT...

## ETEM AND ITS SYSTEMS ARE LOCATED:

- ① In the highest skyscraper in the Balkans Sky Fort (202m)
- ① In a ten-storey luxury hotel in the heart of Manhattan USA
- ① In an exotic resort in the Maldives
- ① At the iconic "Arc de la Defense" in Paris
- ① In the first skyscraper in Greece, the Tower of Athens (103m)
- ① Since 2013, is an approved and certified supplier of the largest European automotive companies BMW, AUDI, JAGUAR LAND ROVER, DAIMLER



# PRODUCTS

## DOORS & WINDOWS

The new generation of energy efficient systems combine elegance with comfort and minimum use of visible frames.

## FAÇADES & VENTILATED FAÇADE SYSTEMS

ETEM's curtain wall systems provide solutions to every contemporary architectural need, delivering functionality and design flexibility.

## BALUSTRADES & PARTITION WALLS

Our partition walls and glass balustrades systems are developed to fit any project, providing unrestricted views with minimal structural interference.





## & SERVICES

### SHADING SYSTEMS

ETEM's systems contribute to optimal management of solar radiation, while visual and thermal comfort is ensured for their users.

### INDUSTRIAL & STANDARD PROFILE

ETEM with extensive experience in the production of standard and custom made profiles, and using as a vehicle continuous investments in modern equipment, is able to produce products for a wide range of industrial applications.

Our experienced in-house engineering and architectural teams works closely with architects and other professionals to provide the best products and support for their needs.

We have the expertise and the solutions that can respond to any challenge at different stages of project development.

Our team conducts an initial in-depth study of each individual case and provide tailor made solutions to meet your technical and design expectations.

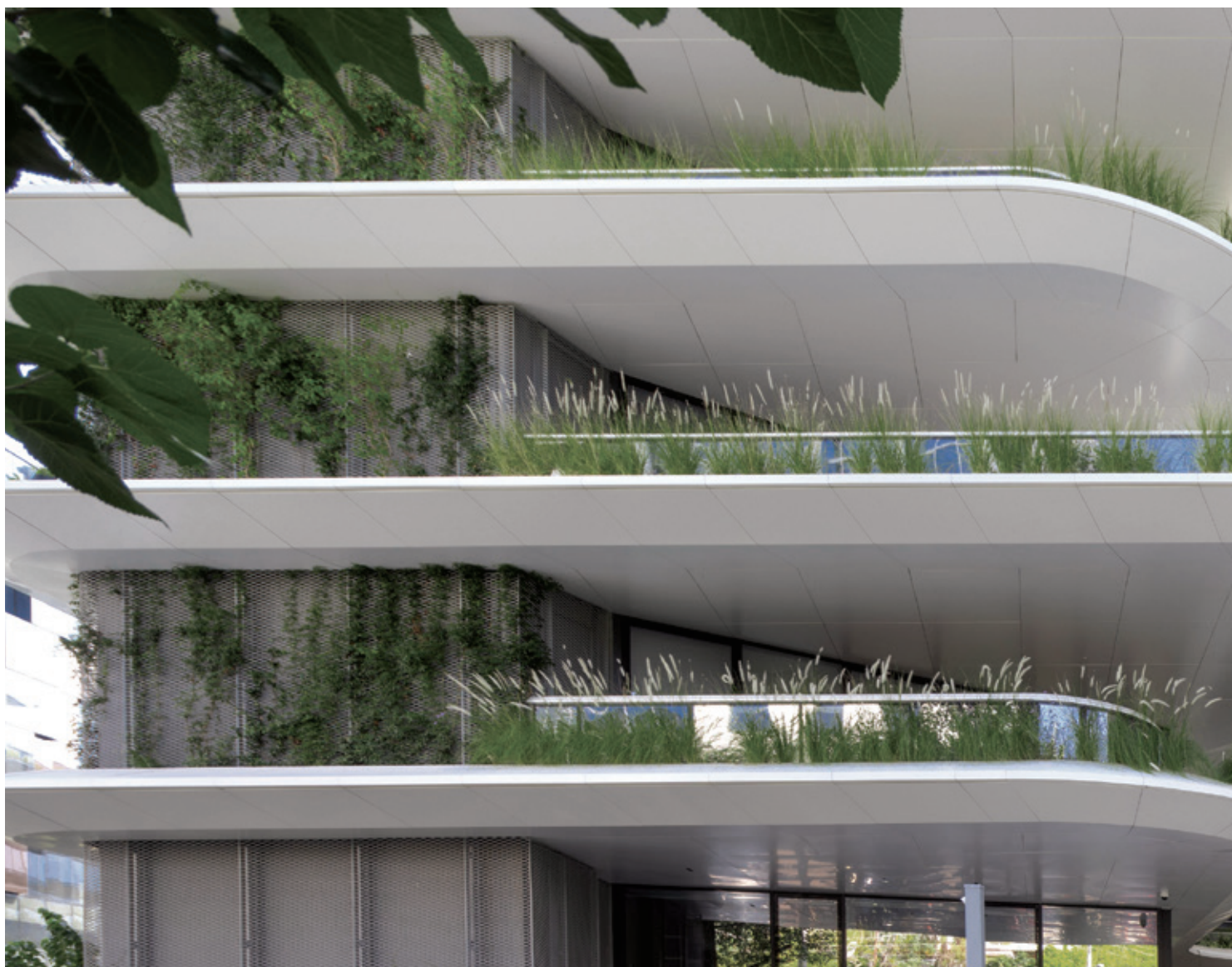


# GREEN BUILDINGS WITH ETEM SYSTEMS

An environmentally sustainable building, designed, constructed and operated to minimize overall environmental impact and protect natural resources, must have a range of certified systems in place to ensure the objective measurement of:

- maximizing energy savings
- optimal management of solar radiation
- building management of the facade with the use of environmentally friendly products

ETEM has the relevant product declarations (EPD's -Environmental Product Declaration) both for the raw material itself (EPD production) as well as for it's integrated aluminum systems.

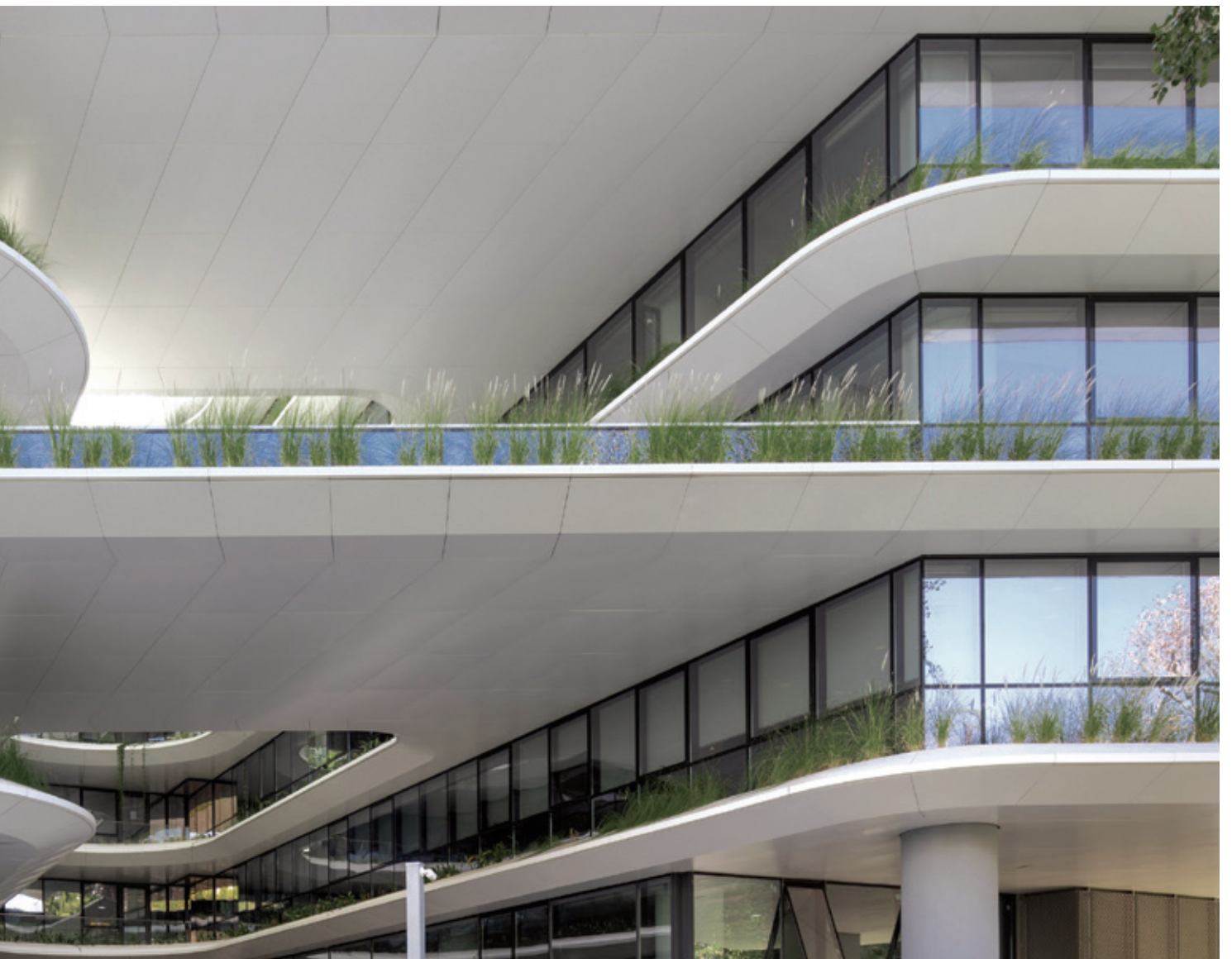




# SUSTAINABLE DEVELOPMENT

Sustainable development is defined as the right balance between economic development, social justice and the protection of the environment, with the aim of meeting existing needs without compromising the ability of future generations to meet their own expectations.

Consistently oriented towards the principles of Sustainable Development, ETEM operates responsibly in the whole range of its activities. Applying responsible practices to the decisions, procedures and systems constitutes ETEM's strategic choice.











**Projects**





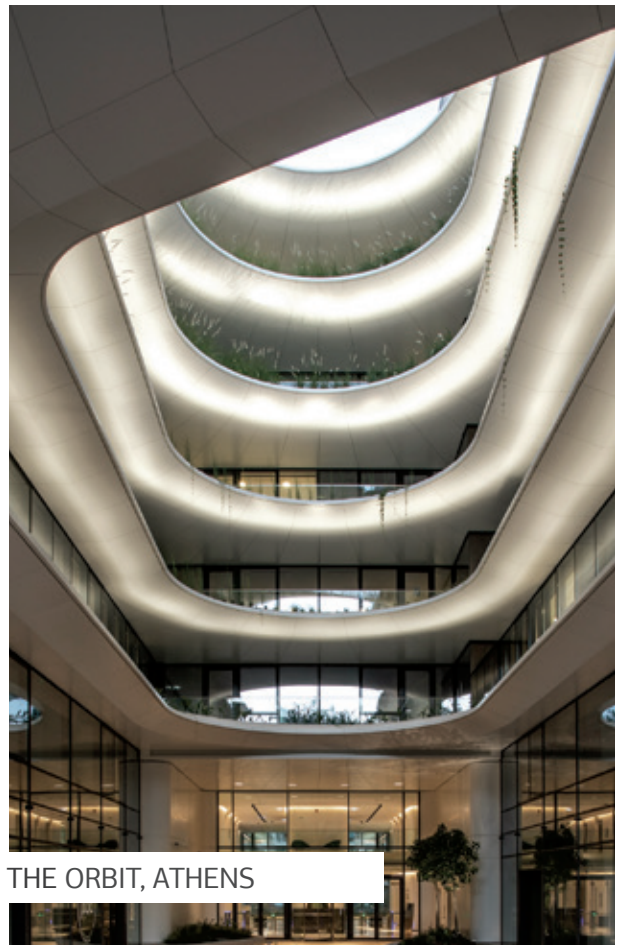
2018 WHYNDHAM HOTEL, ATHENS



2019 NV TOWER, SOFIA



2020 ROBINSON CLUB, CRETE



2020 THE ORBIT, ATHENS





2020 CAYO RESORT, ELOUNDA



2021 RITZ CARLTON, MALDIVES





2021 WATWR FRONT, SRI LANKA



2021 WONDERLOFTS, NJ, USA



2021 KINGS HIGHWAY, NY, USA



2020 RIVER WEST (EXP), ATHENS

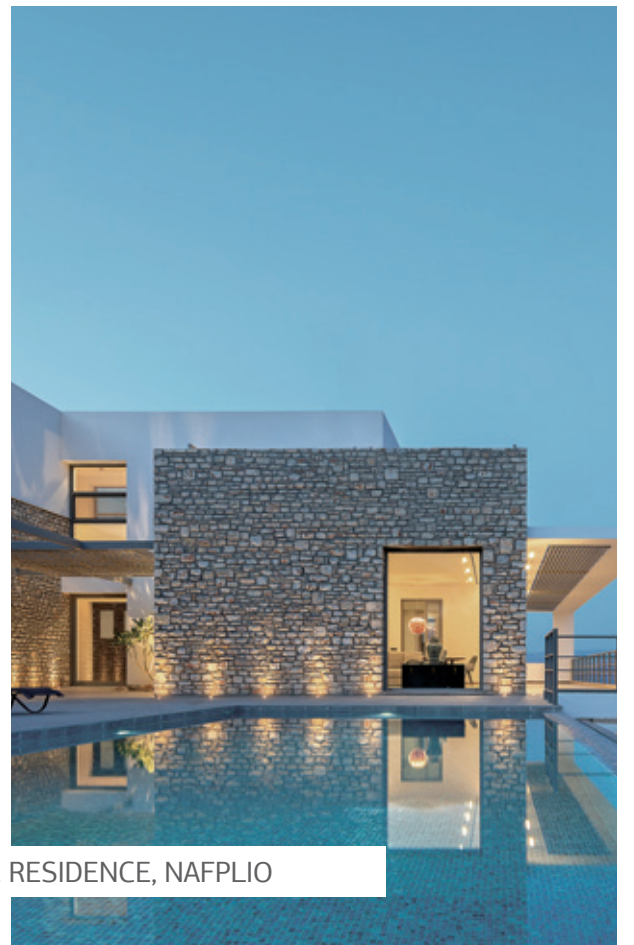




2021 LE GRAND BLEU, NAXOS



2022 5TH AV. HOTEL, NY, USA



2022 RESIDENCE, NAFPLIO





2022 KAIZEN CAMPUS, ATHENS



2023 SKY FORT, SOFIA

## G R E E C E

---

### Headquarters & Plant

Ir. Politechniou 1-4, Magoula 19018,

T. (+30) 210 489 8605

F. (+30) 210 489 8500-10

Email: etem.gr@etem.com

### Thessaloniki Branch

6th km. Thessaloniki-Athens,

570 09 Kalochori Thessaloniki

T. (+30) 2310 790330

F. (+30) 2310 753416

### Chania Branch, Crete

Road Chanion-Sougias, 73131

T. 28210 09875

F. 28210 31104

Email: chania@etem.com

### Heraklion Branch, Crete

Manou Katraki 42, Finikia

T. 2821009875

F. 2821031104

Email: heraklion@etem.com

## B U L G A R I A

---

### E TEM B U L G A R I A S . A .

119 A Iliyantsi blvd. , 1220 Sofia, Bulgaria

T. +359 2 92 19 111

F. +359 2 92 19 160

Email: etem.bg@etem.com

## R O M A N I A

---

### E TEM S Y S T E M S S R L

Șoseaua Olteniței nr. 249, CTPark Bucharest South II,

Popești-Leordeni, clădirea F5.3, mezanin

T. +40 21 351 81 15

F. +021 21 319 30 24

Email: etem.ro@etem.com

## S E R B I A

---

### E TEM S C G

Cara Dusana BB, Industrijska Zona 22 330

T. (+381) 22 32 80 19-20

F. (+381) 22 32 80 19-20

Email: etem.sr@etem.com

## U K R A I N E

---

### E TEM S Y S T E M S L L C

Zdolbunivska Str., 7-D

T. (+38 044) 499 07 87

F. (+38 044) 499 07 86

Email: office@etem.com.ua

